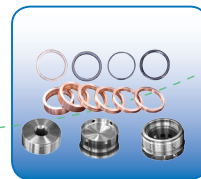
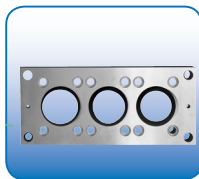
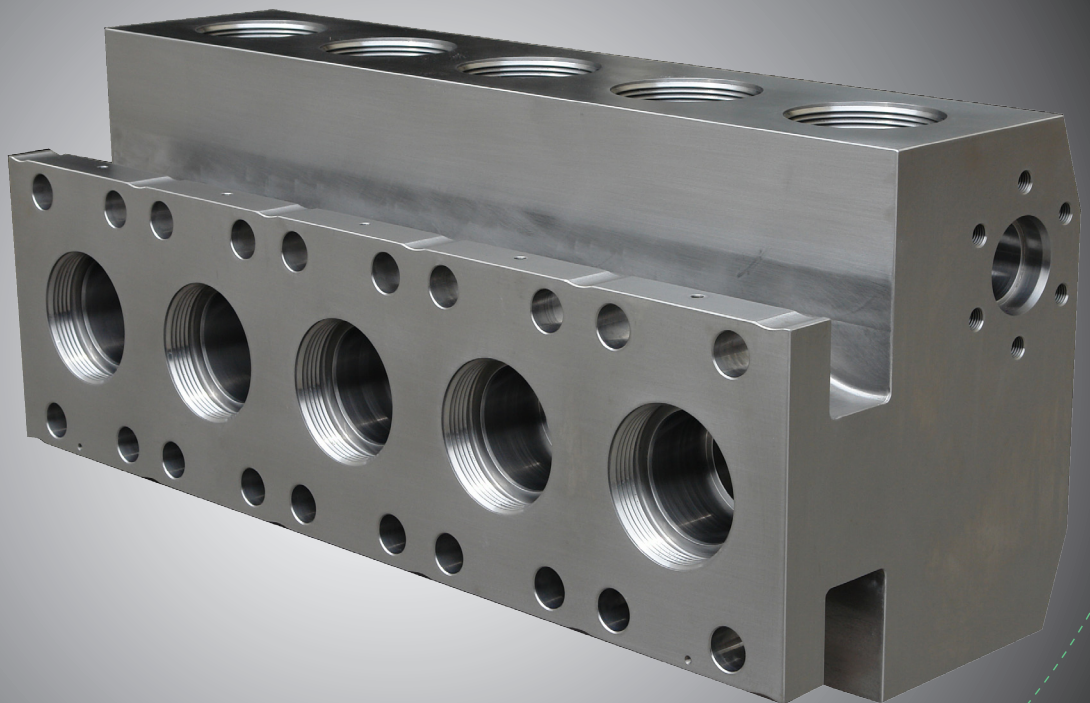




High Pressure Pump Expendables
High Pressure Pump Expendables
High Pressure Pump Expendables



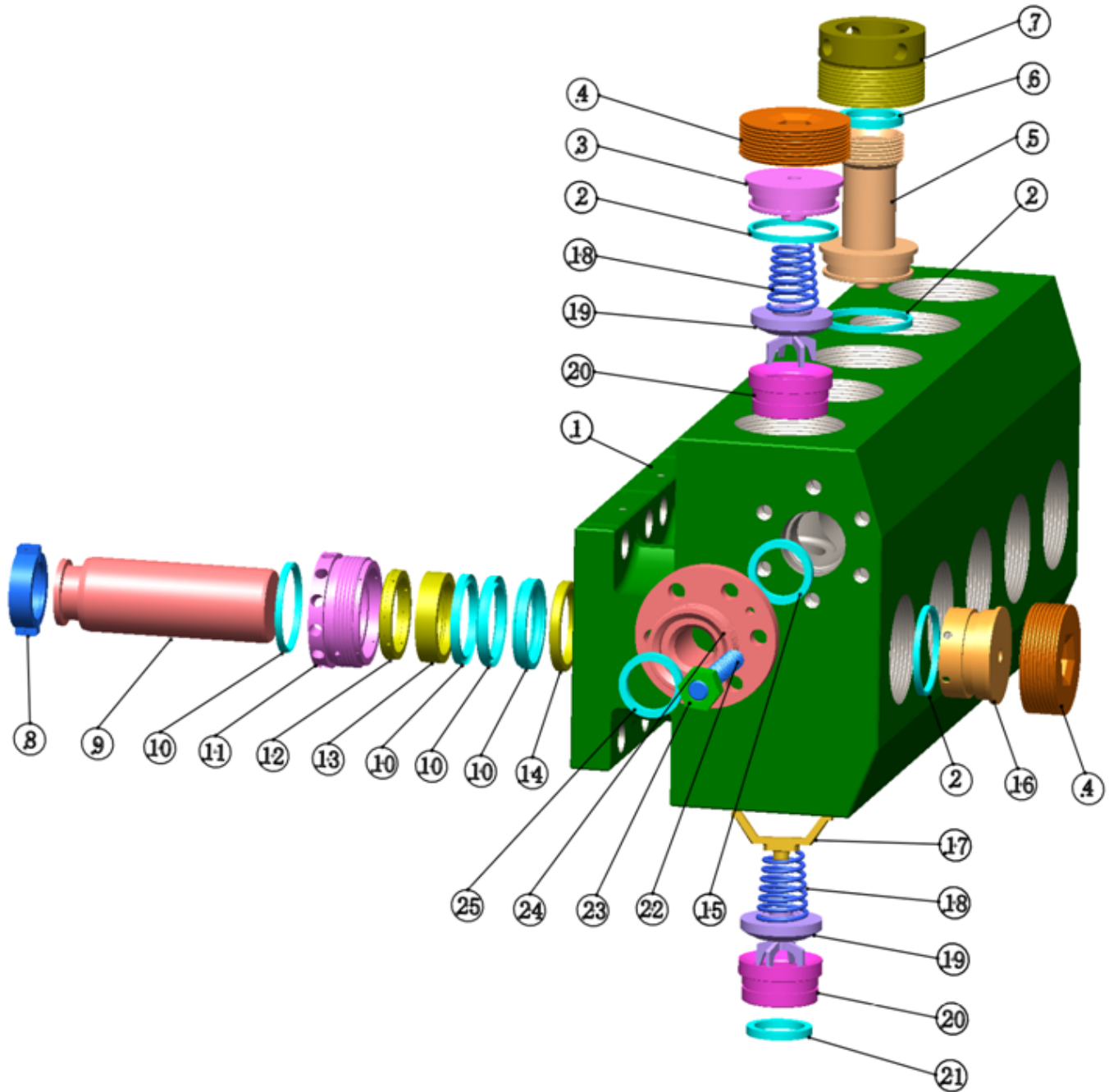
GLOBAL SOLUTIONS

DESIGNING, MANUFACTURING AND PACKAGING FOR THE OIL & GAS INDUSTRY

Beyond Integration
Seamless Solutions™

TS-QWS2500-44

TSC Manufacturing and Supply, LLC.



FLUID END MODULE & ACCESSORIES

ITEM	PART NUMBER	DESCRIPTION	QTY/PUMP
1	TS-QWS2500-44	FLUID CYLINDER	1
2	TS-P108232	SEAL, DISCHARGE COVER	10
3	TS-3P100231	DISCHARGE COVER	4
4	TS-2P112641	RETAINER NUT	9
5	TS-2P100586	GAUGE CONNECTION	1
6	TS-4P10229	SEAL, GAUGE CONNECTION FOR TS-2P100586	1
7	TS-4P101259	GAUGE CONNECTION RETAINER NUT	1
8	TS-3P100340	PLUNGER CLAMP	5
9	TS-3P100654	PLUNGER	5
10	TS-3A107007HP	PACKING ASSY/SOFT4.50 TS-QWS2500-44	5
11	TS-2P100647P	PACKING NUT WIPER GROOVED	5
12	TS-4P100651	LANTERN RING	5
13	TS-4P107775	FEMALE ADAPTER	5
14	TS-4P100649	SPACE	5
15	TS-P109907	SEAL, DISCHARGE FLANGE	2
16	TS-3P106935	SUCTION COVER	5
17	TS-3P100232	VALVE STOP	5
18	TS-055413520	VALVE SPRING	10
19	TS-070113352	VALVE	10
20	TS-080120504	VALVE SEAT	10
21	TS-P108231	SEAL, SUCTION MANIFOLD	5
22	TS-P14896	STUD	12
23	TS-P14897	HEX NUT	12
24		DISCHARGE BLIND FLANGE/WITH BLEED OFF	1/1
25		SEAL, DISCHARGE FLANGE FOR ABOVE	1

TSC does not warrant or represent that any of such information is accurate, or that any products listed are compatible with each other.

Any deviations from the OEM products should be verified as to compatibility.



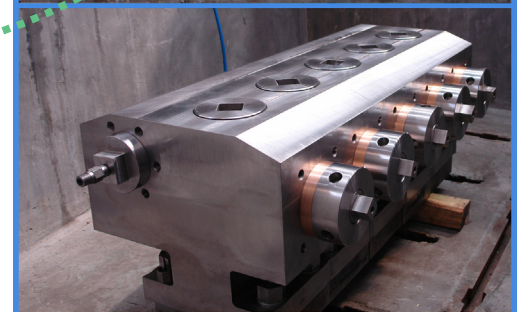
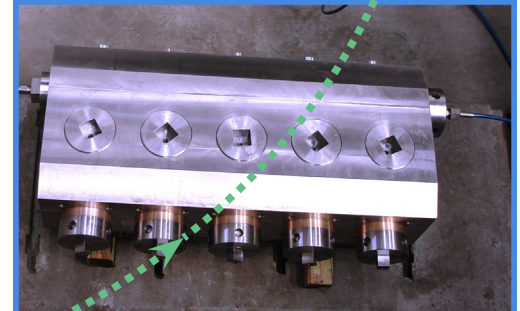
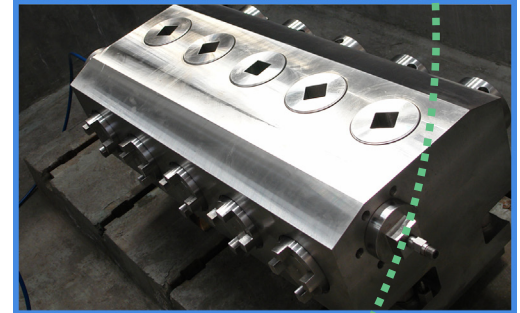
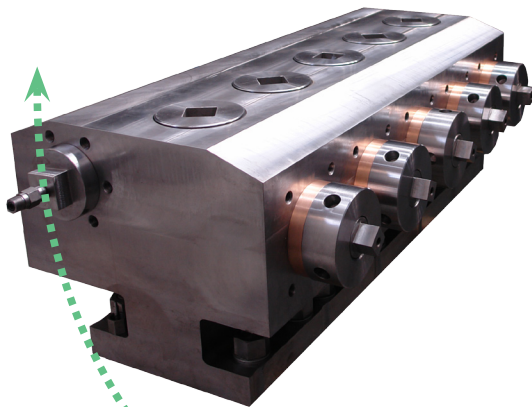
High Pressure Pump Expendables

TSC MANUFACTURING AND SUPPLY, LLC. is a manufacturer and distributor of spare parts for well service pumps and high pressure flow control equipment. Our expanding line of flow control products can be used to safely transport fluids, at high pressure, into the wellbore during various well service applications.

FLUID END MODULES

Our ultra-high strength quintuple reduction forged steel quintuplex fluid end modules are made from AISI 4330 alloy steel, heat treated, precision machined, and autofrettage treated for service above 20,000-40,000 psi to extend product life. All fluid end cylinders are precision machined in-house, and are thoroughly inspected before delivery to the end user to ensure quality of the products. They are completely interchangeable with OEM products.

Autofrettage Procedure Extending the Life of the Fluid Cylinder



Made on CNC Boring Mills

